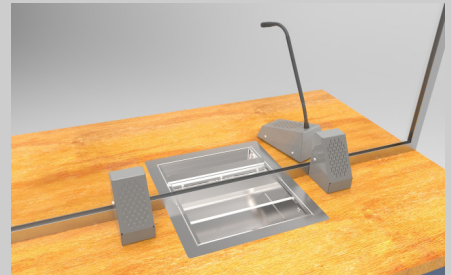




STS-K002

Speech Transfer System and Hearing Loop



Applications

For use where one to one communication takes place such as:

- › Banks
- › Post offices
- › Theaters
- › Information Centers
- › Public Transit Systems
- › Ticket Counters
- › Embassies
- › Government Buildings

Standards

- › CE, ROHS and WEEE compliant
- › BS EN 60118-4, in correct installations

PRODUCT INFORMATION

The STS-K002 Speech Transfer System provides assistance for clear communication where normal speech is impaired by use of glass, a security screen or other similar barriers.

Components:

- › STS-A31H, Hearing Loop and Duplex Audio Communication Amplifier
- › STS-SU1, Staff Unit Speaker and Microphone
- › STS-S60, Customer Surface Mounted Speaker
- › STS-M54, Customer Surface Mounted Microphone
- › IL-AE99, Under the Counter Hearing Loop Aerial
- › PS-55, Power Supply

Physical Data (boxed)

Dimensions	Height – 5.12" Width – 13.39" Depth – 9.45"
Weight	5.42lbs
Construction	Metalwork - Mild Steel STS-A31H - ABS Plastic Housing
Finish Options	Powder Coated <div style="display: flex; align-items: center;"> <div style="width: 15px; height: 15px; background-color: #808080; margin-right: 5px;"></div> Grey Leatherette </div> <div style="display: flex; align-items: center; margin-top: 5px;"> <div style="width: 15px; height: 15px; background-color: #333; margin-right: 5px;"></div> Black Textured </div>



contacta 

Phone: (616) 392-3400
Email: sales@contactainc.com
www.contactainc.com

Physical and Technical Data (Individual Parts)

Components	Physical Data	Technical Data	
STS A31 Hearing Loop and Duplex Audio Communication Amplifier	Dimensions: Height - 1.58" Width - 4.58" Depth - 4.50" Weight: 0.32lbs Construction: ABS Plastic Housing Finish: Matt Black, Fine Texture	Supply Voltage	12-14 VDC
		Quiescent Current	100mA typical
		Operating Current	2A typical on speech peaks
		Power Switch	Push on - push off (tact switch under membrane)
		Microphones	Electret, supply 5V via 2.2K load resistor
		Speaker Output Power	RMS: 2.5W / 8 Ω 4.4W / 4 Ω
		Loop Drive Compliance	Constant current, bounded by 4V RMS & 3A RMS
		Total Harmonic Distortion	<5% (loop and speakers)
STS-SU1 Staff Unit Speaker and Microphone	Dimensions: Height of base - 2.61" Height from bottom of base to top of microphone fully extended - 14.50" Width - 3.80" Depth - 6.02" Weight: 1.79lbs Construction: Mild Steel Finish: Powder Coated Grey Leatherette or Black Textured	Speaker	
		RMS	5W
		Impedance	4 Ω
		Output	SPL 1W @ 1M 85dB
		Frequency Response	150Hz - 10300Hz
		Microphone	
		Directional Response	Cardioid
		Sensitivity	49.5dB+ 2dB @ 1kHz (0dB=1V/pa)
		Impedance	1.6K Ohms+ 3-% @ 1kHz
		Frequency Response	150Hz - 10500Hz
STS-S60 Surface Mounted Speaker STS-M54 Surface Mounted Microphone	Dimensions for both STS-S61 and STS-M56: Height - 4.26" Width - 2.37" Depth - 2.93" STS-S60 Weight: 1.23lbs STS-M54 Weight: 1.04lbs Construction: Mild Steel Finish: Powder Coated Grey Leatherette or Black Textured	Speaker (STS-S60)	
		RMS	5W
		Impedance	4 Ω
		Output	SPL 1W @ 1M 85dB
		Frequency Response	150Hz - 11000Hz
		Microphone (STS-M54)	
		Directional Response	Omni-Directional
		Sensitivity	-42.5 ± 2.0dB @ 1kHz (0dB=1V/pa)
		Impedance	2K Ohms =/- @ 1kHz
		Frequency Response	100Hz - 5000Hz
PS-55 Power Supply	Dimensions: Height - 1.38" Width - 2.08" Depth - 3.92" Cable length: 70.87" Weight: 0.51lbs Construction: ABS Case Finish: Black	Input	100-240V 50-60Hz 1A max
		Output	14V 2.14A 30W max
IL-AE99 Loop Aerial	Dimensions: To be moulded on site to required size by installer Weight: 0.19lbs Construction: Copper wire with PVC casing Finish: Black		